

Spontaneous fractures in metastatic bone, in large skeletal segments, must be always stabilized when the clinical condition allows.



1

Even in tumor diseases, the quality of life must be maintained high.

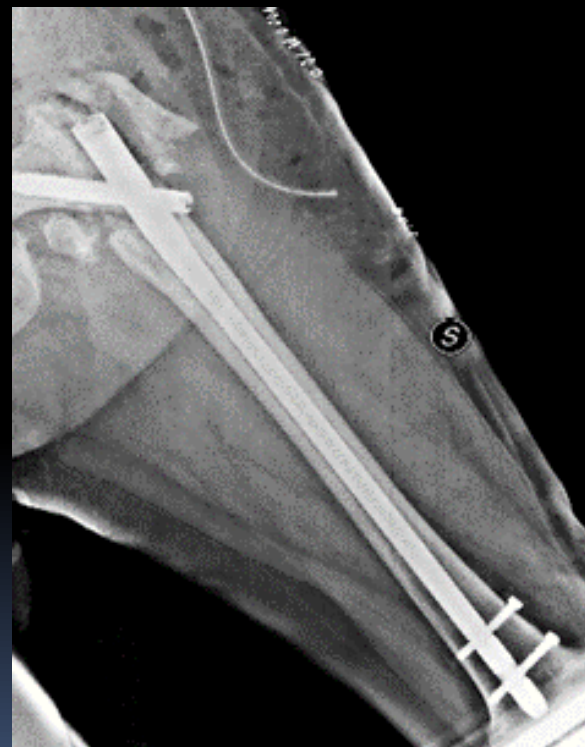
Woman, 82 years old  
(august 2016).

Sub-trochanteric fracture of the left femur.

Total-body metastatic  
invasion. (1)

Decision of surgical  
stabilization with  
long nail

X-ray control after surgery  
(2)



2

Charging starts with crutches  
after 10 days.

X-ray control after 1 month (3)

X-ray control after 4 months (4)

Today... she walks.

Even in front of the cancer  
disease has to be respected  
the dignity of the person



**Roberto Urso MD – Ortophedic Surgeon**

[www.robortourso.it](http://www.robortourso.it)

[robortourso@robortourso.it](mailto:robortourso@robortourso.it)